



Dear Members,

Congratulations - you have made it through Circuit Breaker. Now, let's head towards recovery. We still have some road to travel to reach Phase 3 – Safe Nation, but we are hoping that Singapore will navigate through Phase 1 and 2 without any new waves of virus so that we all can continue to work safely in the Lion City. Hopefully we will see each other face to face before long.

As the COVID situation worsened in March, we realized that to continue any form of activities, SwedCham had to go 100% digital. We started to roll out events via Zoom without really knowing if you, our Members, were interested in events on an online platform. But you have backed us all along – and we thank you for that. All of our activities during April and May have been well attended, and we have discovered that, although nothing beats face to face encounters, webinars can serve as a brilliant medium too. For example, we have expanded our collaboration with the other SwedChams in APAC through our regional events and we have had guest speakers from overseas who would not normally have been accessible in person.

One thing is clear: SwedCham has a very dynamic membership base also in COVID times and it has been a pleasure to navigate through these unprecedented and frankly scary times together with you. We hope you will keep coming back to SwedCham.

Your dedicated SwedCham team,

Lisa & Anna

## SwedCham Member News

Welcome Vinda as New SwedCham Partner for 2020!



Founded in 1985, Vinda International is a leading hygiene product company in Asia, with Swedish Essity (SCA) as its majority shareholder.

Vinda runs all Essity's businesses in China and Southeast Asia. Key brands include Vinda, Tempo, Tork, TENA, Dr. P, Libresse, VIA, Libero and Drypers.

---

### New SwedCham Members

- [Easy-Laser](#), contact [Sven Fleischer](#), Area Sales Manager, APAC
- [BioGaia](#), contact [Sebastian Nummelin](#), Regional Manager, Asia Pacific
- [Meca](#), contact [Maud Haellsten](#), Director
- [Moblrn](#), contact [Paul Borde](#), Manager APAC.

## Wallenberg x Hallberg to SwedCham in June



We are delighted to announce that we will have **Ms Anna Hallberg, Sweden's Minister for Foreign Trade, and Mr Jacob Wallenberg, Chairman Investor AB**, as guests at SwedCham on 10 June .

The discussion, which will be moderated by Peter Ling-Vannerus, Chief Representative of SEB Beijing, will focus on the Swedish trade policy during the COVID-19 crisis and what industrial support measures have been put in place to date.

Our speakers will also share their experiences from the public sector in managing the pandemic domestically, as well as provide insights into the private sector from the unique perspective of the Wallenberg family.

The event is co-hosted by the Swedish Chambers of Commerce in APAC. A huge thank you to SEB for your support in arranging this webinar.

**Register for the event [here](#). Free for SwedCham Members.**

## People Analytics: Are you asking the Critical Workforce Questions?

During the earlier stages of the COVID-19 outbreak we have, across industries, seen efforts to gather employee information through surveys and data collection. Leaders had to make tough decisions about the size of their workforce, while trying to maintain a focus on putting people first.

As we approach recovery stage, focus is shifting towards guiding people out of the crisis and engaging in longer-term planning. And once in full recovery mode, we need to ask entirely new questions to understand how to operate in a new, post-pandemic world.

**SwedCham's People & Culture Committee invites you to a panel discussion on 12 June on the topic of People Analytics and how to navigate towards a new normal. Panelists from [Ericsson](#), [Mercer](#) and [Brilliant Future](#). Register for the event [here](#).**



## Last weekly COVID-19 NewsFlash: What would you like us to cover?

For almost two months now, SwedCham has been hosting a weekly COVID-19 NewsFlash - a 30 min update with a different guest on a different topic every week. On Monday next week, our Swedish Trade Commissioner Mr Emil Akander will be our guest and the week after Ms Anna Ekéus Thorson from the WHO.

**Our last NewsFlash will be on Monday 16 June and for this one we would like to have your input: What COVID-19 topic would you like to have covered in our last NewsFlash?** What have we missed that you find important? Please answer the 10 sec, one question poll below latest by Monday 1 June and we will do our best to get your wish fulfilled.

Click [here](#) for the 10 second poll.

---

## Try Swedish x RedMart is still live!

***Try Swedish* is a campaign designed to promote Swedish food and beverages globally - and last year the *Try Swedish* shop was launched on RedMart in Singapore.**

During the pandemic, RedMart's operations have been greatly impacted by the surge of orders from consumers - you may have personally experienced problems with delivery slots & stocks. During Singapore's recovery phase, it is still uncertain when RedMart's services will return to normal. The good news is though, that the *Try Swedish* shop is still active to fulfil your cravings for Arla and Wasa products!

### **Special promotion for you during the month of June!**

Running out of ideas on what to eat while working from home? Great news! During the month of June, AXA is running a special promotion for their Swedish Harvest muesli on their Lazada shop [here](#).

Apply the code **TrySwedish4** in your shopping cart and you will be able to purchase their muesli for just \$4!



## Do Business - go where? Check out Safeture's OpenUpForBusiness map

The OECD estimates that the current Covid-19 restrictions costs the world economy US\$25 billion per day. Swedish company **Safeture** launched [www.openupforbusiness.com](http://www.openupforbusiness.com) to help people, companies and organizations to open up for business again, providing reliable information to help make the right decisions, whether it is your next business trip or your next family vacation. The content is constantly monitored and updated by the Safeture analyst team. The map includes information about area lockdowns, quarantine measures, flight restrictions, school closures and links to more information.

### Vietnam

**Quarantine measures**

Commercial flights at the Quang Ninh Province-based Van Don International Airport will resume from May 4. Daily flights on the Van Don-Ho Chi Minh City route will be offered by budget carrier Vietjet, while four weekly flights on the route will be provided by national flag carrier Vietnam Airlines from May 16 and Bamboo Airways is to operate daily flight on the route from June 1. Vietnam Airlines will also operate three flights linking Van Don and Da nang per week from May 16. (The Star, 29.04.2020)

- Passengers are not allowed to enter Viet Nam.
  - This does not apply to passengers on diplomatic or official duty. They will be subject to mandatory medical declaration and self-isolation.
  - This does not apply to passengers who are experts, business managers or highly skilled workers. They will be subject to mandatory medical declaration and self-isolation.
  - This does not apply to passengers approved by National Steering Committee on Covid-19 Prevention and Control.
- For transportation of nationals of Vietnam returning to Vietnam, airlines must contact the Vietnamese Diplomatic Representative agency in the local country in advance.
- All passengers will be placed on quarantine at a designated facility for 14 days upon arrival.

## Goodbye Circuit Breaker – Hello Phase 1,2,3

Lost in translation between what to do and not to do post-CB? Here comes a brief overview:

### Phase 1

260 Orchard Road

The Heeren #07-01  
info@swedcham.sg

Singapore 238855  
[www.swedcham.sg](http://www.swedcham.sg)

Besides essential businesses that are already operating, more Singaporeans will gradually be allowed to return to work. This starts with businesses that operate in settings with lower transmission risks, including:

- Most manufacturing and production facilities, eg. semiconductors and medical technology
- Most businesses with employees working in offices and settings that do not require interactions with large groups of people, eg. finance & insurance, and IT & info services.

Tele-commuting must be adopted to the maximum extent in businesses that re-open. This means those who have been working from home so far should keep doing so, and employees should go to the office only where demonstrably necessary, e.g. to access specialised systems/equipment that cannot be accessed from home.

To check if a business may resume, refer to <https://covid.gobusiness.gov.sg/permittedlist/>.

### **Phase 2 (Safe Transition)**

More firms and businesses will gradually be allowed to re-open. Starting with F&B dine-in and retail outlets, gyms and fitness studios, and tuition and enrichment centres.

Safe management measures need to be implemented and practised by employers and employees. Everybody needs to maintain a safe environment for their customers. Those who can work from home should continue to do so.

### **Phase 3 (Safe Nation)**

This will be the 'new normal' for Singapore, as we expect to remain at this state until an effective vaccine or treatment for COVID-19 is developed. Social, cultural, religious and business gatherings or events would have resumed. Gathering sizes would have to be limited in order to prevent large clusters from arising.

### **Opening of borders**

Singapore will gradually re-open its borders for Singaporeans to conduct essential activities overseas and to allow safe travel for foreigners entering or transiting through Singapore. Necessary precautions and safeguards will be in place. As the global situation remains volatile, such moves will be assessed and implemented separately from the timing of the three phases of re-opening outlined above.

## Upcoming SwedCham events

**Monday 1 June:** [Weekly COVID-19 NewsFlash](#) on the current state of Sweden's international trade exports with Sweden's Trade Commissioner [Emil Akander](#)

**Wednesday 3 June:** [Weekly virtual coffee break](#)

**Monday 8 June:** Weekly COVID-19 NewsFlash with Anna Ekéus Thorson, the World Health Organization (WHO)

**Wednesday 10 June:** [Swedish Trade Policy](#) with [Anna Hallberg](#), Sweden's Minister for Foreign Trade, and [Jacob Wallenberg](#), Chairman, Investor AB

**Friday 12 June:** [People Analytics panel discussion](#) with [Ulrika Jonsson](#), Head of Business Development at Brilliant Future, [Siddharth Mehta](#), Business Leader Career Business at Mercer and [Sarajit Poddar](#), Director, People Analytics, Group Function People at Ericsson.

## Past SwedCham events

### [Weekly COVID-19 NewsFlash](#)

- **27 April:** The Latest on China with L-A Severin, Chairman, SwedCham China
- **4 May:** The latest on Sweden & Singapore with HE N. Kvarnström, Sweden's Ambassador to Singapore
- **11 May:** The EU Perspective with HE B. Plinkert, Ambassador of the European Union Delegation to Singapore
- **18 May:** Will our Supply Chains Recover? with Dr D Elms, Founder and Executive Director, Asian Trade Centre
- **26 May:** The Airline Industry with S. Grossmann, Regional Manager Southeast Asia, Finnair.

### [Regional Events](#)

- **25 March:** How to Successfully Work from Home with SwedCham Hong Kong and Japan
- **16 April:** The Impact of the Corona Crisis - Now and Beyond with SwedCham Thailand and Stockholm Chamber of Commerce
- **7 May:** Fredrik Härén on Creativity with SwedCham Philippines.

### [Partner Events with Rajah & Tann](#)

- **6-14 April:** Singapore's COVID-19 (Temporary Measures) Bill Explained
- **26 May:** Shipping, Oil & COVID-19

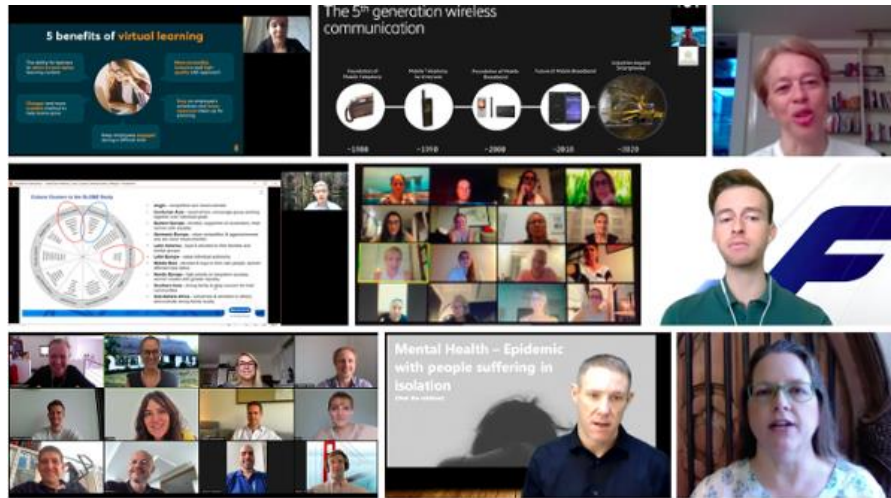
### [Social Events](#)

- Weekly Virtual Coffee Breaks **every Wednesday**
- Women4Women Remote After Work on **1 April, 29 April, 28 May**.

### [Webinars](#)

- **17 April:** Sustainable Energy Transformation in Southeast Asia with C. Lindwall, Country Manager, and J. Winsa, Consultant, Business Sweden.
- **23 April:** Is 5G the Game Changer? with L. Landgren, Vice President, Ericsson
- **30 April:** H&M on Sustainable Fashion with M. Dang, Sustainability Manager SEA, H&M
- **8 May:** Never Stop Learning with N. Wartoft, CEO, Tigerhall
- **14 May:** Cross-cultural Communication, R. Foo, Group Director, Mercuri Urval
- **19 May:** Regional HR Managers' Forum
- **21 May:** Executive Loneliness during Crisis with N. Jonsson, CEO, EGN.





260 Orchard Road

The Heeren #07-01  
info@swedcham.sg

Singapore 238855  
[www.swedcham.sg](http://www.swedcham.sg)

## SwedCham Main Partners



**SAAB**



## SwedCham Partners



YOUR TRANSPORT SOLUTION. YOUR CHOICE.



electrical engineering | automation



WE CONNECT THE FUTURE



**FINNAIR**



**SKF**



## SwedCham Gold Sponsor

**RAJAH&TANN ASIA**